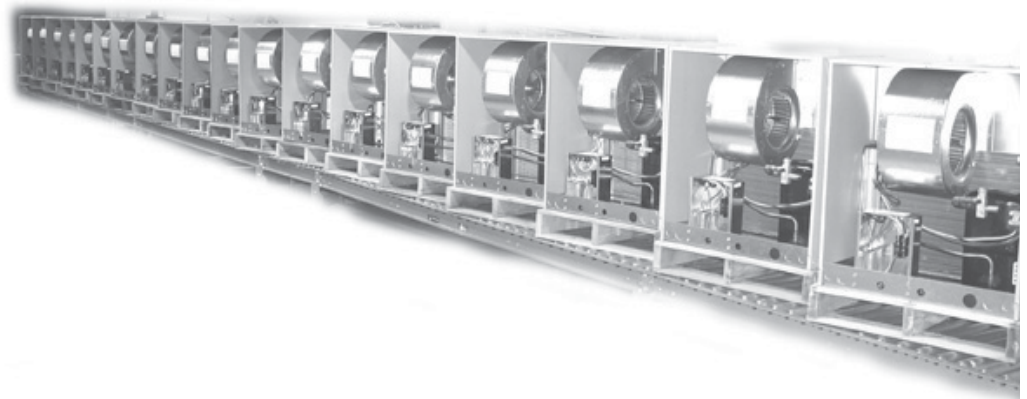


A e r o S y s

I n c o r p o r a t e d



Air Cooled Frostless Heat Pumps

AeroCon THHP-F Series



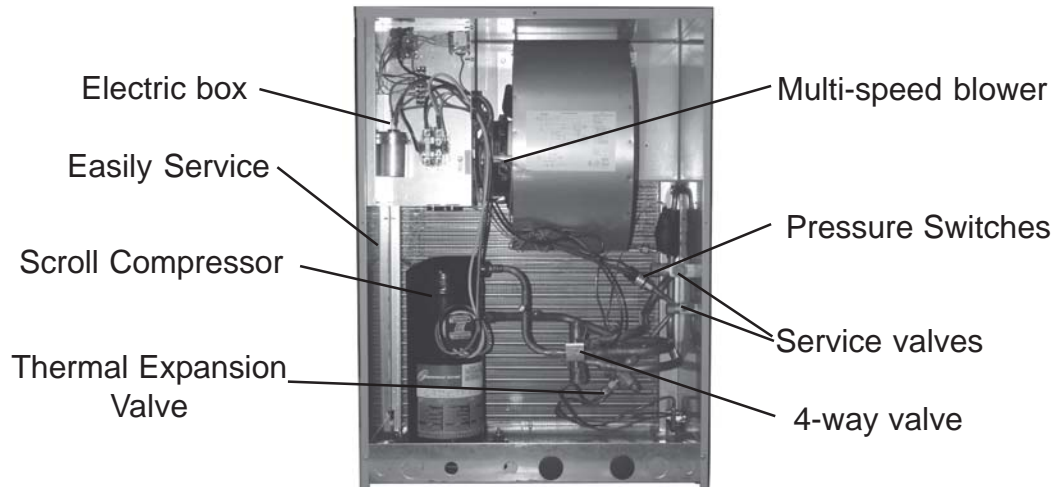
AeroSys, Inc.

32 Thomas Johnson Drive Frederick, Maryland, 21702

Tel (301) 620-0002 Fax (301) 620-0685

www.aerosysinc.com

System View



Design Features

Advanced Scroll Compressor
Advanced coil design
Powder coat over galvanneal, after metal is sheared, punched and formed for corrosion protection
Safety screen painted to match unit
Electric box located in top of unit for easier service
Low and High pressure safety switches
Low RPM blower

Multi-speed blower motor
No proprietary components
Factory piped service valves, pressure switches and pressure ports
5 year compressor warranty
Easy, full front access for service
THHP-F systems are available in 3 cabinet sizes for customer flexibility.

Guide Specifications

General

The air cooled heat pump shall be factory tested prior to shipment. The system shall be listed and labeled in compliance with UL Std. 1995 for Heating and Cooling Equipment by a Nationally Recognized Laboratory.

Cabinet Construction

The cabinet and access panels shall be constructed from heavy gauge galvanneal steel and powder-coated with an attractive neutral color for corrosion protection. The coil and blower discharge shall be protected with a heavy gauge screen.

Compressor

The compressor shall be a high reliability, high efficiency and low sound scroll compressor designed for use with heat pump applications. The compressor shall incorporate an internal discharge gas muffler and external vibration mounting isolation.

Coil

The coil shall be constructed of copper tubes and aluminum fins and cased with heavy duty galvanized steel header plates.

Motor

The motor shall be a permanent split capacitor (PSC), continuous duty air-over design with internal thermal protection and flexible mounts.

Blower

The blower shall be galvanized treated for corrosion protection and shall be statically and dynamically balanced to minimize vibration and noise. Blowers shall be selected for low rpm and low sound characteristics.

Refrigerant Pressure Switches

The unit shall be supplied with low and high pressure switches. The pressure switches shall be hermetically sealed, with fixed cut-in and cut-out settings.

Performance Capacity				
	Cooling ⁽¹⁾ BTU/H	Watts	Heating ⁽²⁾ BTU/H	SEER
“R” Series Heat Pump Units				
THHP-F-18-R	19,600	1,930	18,800	10.6
THHP-F-24-R	23,200	2,360	23,200	10.2
THHP-F-30-R	28,600	3,080	28,600	10.0
“S” Series Heat Pump Units				
THHP-F-18-S	19,600	1,930	18,800	10.7
THHP-F-24-S	23,200	2,360	23,200	10.3
THHP-F-30-S	28,600	3,080	28,700	10.0
“T” Series Heat Pump Units				
THHP-F-18-T	19,700	1,910	18,900	10.8
THHP-F-24-T	24,200	2,275	23,500	10.3
THHP-F-30-T	28,800	3,050	28,600	10.0
ARI 210/240 conditions:				
⁽¹⁾ 80°F DB, 67°F WB Indoor & 95°F DB, 75°F WB Outdoor				
⁽²⁾ 70°F DB, 60°F WB Indoor & 47°F DB, 43°F WB Outdoor				

Electrical Data			
Unit Data@208-230/1/60	THHP-F-18()	THHP-F-24()	THHP-F-30()
System Max Fuse Size	15 Amp	20 Amp	25 Amp
Wire Size, AWG	14 ga	12 ga	12 ga
Motor FLA	1.0	1.3	1.6
Compressor RLA/LRA	8.6/39.0	11.4/54.0	15.7/73.0

Model	THHP-F-18()	THHP-F-24()	THHP-F-30()
Liquid Line Connection	3/8"ODS	3/8"ODS	3/8"ODS
Suction Line Connection	3/4"ODS	3/4"ODS	3/4"ODS
Condensate Drain Connection	3/4"NPT	3/4"NPT	3/4"NPT
Weight, lbs. (net/shipping)	160 lbs/164 lbs	162 lbs/166 lbs	163 lbs/167 lbs

Standard Discharge Safety Grille



Optional Feature



Architectural Grille

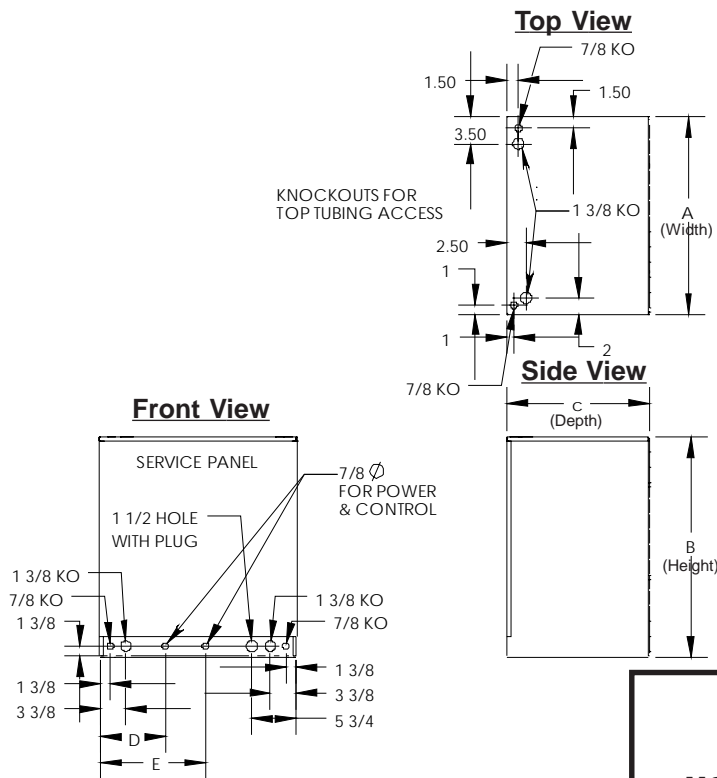
The unit shall have an extruded aluminum anodized architectural louver grille. The grille can be powder coated to match the color requirements of the project.

Dimensional Data



Listing # E112295

Complies with
UL 1995
Heating and Cooling
Equipment



Three sizes to choose from!



Dimensions (in.)					
	Width	Height	Depth		
MODEL	A	B	C	D	E
THHP-F-18R	29 ¹ / ₂	23	18 ¹ / ₂	8 ¹ / ₂	13 ³ / ₄
THHP-F-18S	26	28 ⁵ / ₈	18 ¹ / ₂	8 ¹ / ₂	13 ³ / ₄
THHP-F-18T	23 ³ / ₄	32	18 ¹ / ₂	7 ³ / ₄	12 ¹ / ₂
THHP-F-24R	29 ¹ / ₂	23	18 ¹ / ₂	8 ¹ / ₂	13 ³ / ₄
THHP-F-24S	26	28 ⁵ / ₈	18 ¹ / ₂	8 ¹ / ₂	13 ³ / ₄
THHP-F-24T	23 ³ / ₄	32	18 ¹ / ₂	7 ³ / ₄	12 ¹ / ₂
THHP-F-30R	29 ¹ / ₂	23	18 ¹ / ₂	8 ¹ / ₂	13 ³ / ₄
THHP-F-30S	26	28 ⁵ / ₈	18 ¹ / ₂	8 ¹ / ₂	13 ³ / ₄
THHP-F-30T	23 ³ / ₄	32	18 ¹ / ₂	7 ³ / ₄	12 ¹ / ₂

Other AeroSys Products

AeroCon THDC Series air cooled condensing units in sizes from 1-¹/₂ ton to 2-¹/₂ ton capacities.

AeroPump THHP Series air cooled condensing units in sizes from 1-¹/₂ ton to 2-¹/₂ ton capacities.

AeroCool DCW Series chilled water air handlers in sizes from 1-¹/₂ ton to 2-¹/₂ ton capacities.

AeroCool DDX Series direct expansion air handlers for use with remote condensing units from 1-¹/₂ to 2-¹/₂ ton capacities.

AeroPure Refrigerants, certified to ARI 700.

